



# Securing PrOSPeCT for the future

## Pre-Budget Submission

January 2026



## Executive Summary

This submission seeks continuation funding for an established national precision oncology program that provides equitable access to genomic profiling and matched treatment recommendations for Australians with advanced and incurable cancers. Funding of **\$71 million is sought to maintain delivery of the Precision Oncology Screening Platform Enabling Clinical Trials (PrOSPeCT) program through to the end of 2028**. The program infrastructure has been built through prior Australian Government investment and addresses identified gaps in the health system by meeting significant unmet clinical needs, particularly for priority populations.

Since March 2023, more than 20,000 Australians have been referred to participate, including a high proportion of patients with rare or less common cancers, around 30% from rural, regional and remote Australia, and approximately 2% Aboriginal and Torres Strait Islander people. Real-world data indicate that patients receiving matched treatment recommendations may experience clinically meaningful improvements in outcomes, including substantially higher five-year survival compared with standard care.

**A patient is referred to the program every 15-minutes** with significant growth over the last 12-18 months. Based on current demand, **the existing funding allocation, \$30.8 million announced in March 2025 is projected to be exhausted by September 2026**. In the absence of further funding, the program would be required to close, resulting in loss of access for patients, reduced therapeutic options and poorer overall outcomes.

The Australian Government is currently considering longer-term funding approaches to support access to precision oncology as part of routine care. **Engagement with the Department of Health, Disability and Ageing and other relevant Australian Government agencies is ongoing in relation to the continuation of the program and consideration of sustainable funding models**. Continuation funding will maintain critical infrastructure, workforce capability and clinical pathways while longer-term arrangements are considered.

The investment would support access for **over 25,000 patient referrals** and is expected to deliver **substantial patient benefit**, including **an estimated 799–1,570 life-years gained** and **approximately 1,133 additional five-year survivors** among patients who successfully complete genomic profiling and have relevant biomarkers—**representing nearly half of those who receive a molecular report**—with additional benefits expected for other patients through alternative biomarker-guided therapies.

Providing operational stability and planning efficiency through to the end of 2028 supports a focus on a sustainable and equitable approach to the permanent integration of precision oncology services into the health system for the future.

Investment in PrOSPeCT delivers strong **economic and patient returns**—accelerating clinical trials, growing Australia's life sciences sector, creating jobs, and reducing patient costs—while **supporting government priorities** for equitable access, genomics integration, rare cancer care, and health system reform.

## About Omico

Omico is an Australian not-for-profit organisation supporting precision oncology by fast-tracking molecular profiling and biomarker-led clinical trial matching, with a focus on improving equity in cancer care for Australians with advanced and incurable cancers, including those in regional and remote areas.

Operating at the intersection of health service delivery, innovation, and research, Omico's role is to translate the latest scientific advances into breakthroughs in clinical care, health policy and system reform. Through nationally coordinated infrastructure, partnerships, and service models and by fostering public-private collaboration, Omico promotes equitable access while safeguarding public health resource sustainability.

Acting in the public interest, Omico delivers evidence-based, value-driven programs that support patients, clinicians and health systems, and generates real-world data to inform policy and investment decisions. Omico works with governments, clinicians, researchers and industry to address inequities in access to precision oncology and clinical trials.

With expertise in genomics, technology, data analytics and clinical practice, Omico applies a systems-based approach to program design and implementation. Its national network currently connects more than 80 cancer centres, seven accredited laboratories and clinicians across metropolitan, regional and remote settings, supporting consistent access to precision oncology services across Australia.

Read more: [Omico Impact Report](#)

## About Precision Oncology

Over the past three decades, precision oncology has reshaped cancer care through the development of targeted treatments matched to specific molecular biomarkers. This approach has improved clinical outcomes while reducing unnecessary toxicity, and now underpins most new cancer therapies, with ~90% of late-phase oncology drugs designed against a biomarker.<sup>1</sup>

Advances in cancers such as non-small cell lung cancer illustrate the impact of precision oncology. Since 2000, validated molecular targets have expanded rapidly,<sup>2,3</sup> contributing to a more than doubling of five-year survival in Australia.<sup>4</sup> At the same time, scientific understanding of cancer biology has increased markedly, driving greater complexity in diagnosis and treatment and increasing the importance of coordinated, system-wide approaches to care.

Precision oncology has particular significance for patients with rare cancers and cancers of unknown primary, which together account for a substantial proportion of cancer-related mortality in Australia,<sup>5</sup> but have historically been underserved by conventional drug development. Recent growth in tumour-agnostic therapies,<sup>6,7</sup> and rare-cancer clinical trials<sup>8</sup>—enabled by comprehensive genomic profiling (CGP)—signals a shift toward addressing these unmet needs. The key policy challenge is now ensuring these innovations can be integrated into routine care in an equitable, sustainable way within a publicly funded health system.

1. IQVIA, 2018. *Global Oncology Trends 2018*. <https://www.iqvia.com/insights/theiqvia-institute/reports/global-oncology-trends-2018> (2018, accessed 02/02/2022).
2. Brims FJ, McWilliams A, Harden SV, O'Byrne K. Lung cancer: progress with prognosis and the changing state of play. *Med J Aust*. 2022 Apr 18;216(7):334-336. doi: 10.5694/mja2.51474. Epub 2022 Mar 29. PMID: 35352375; PMCID: PMC9310756.
3. Howlader N, Forjaz G, Mooradian MJ, et al. The Effect of Advances in Lung-Cancer Treatment on Population Mortality. *N Engl J Med*. 2020;383(7):640-649. doi:10.1056/NEJMoa1916623.
4. Cancer Australia. Lung cancer in Australia statistics. <https://www.canceraustralia.gov.au/cancer-types/lung-cancer/statistics> 2023 (accessed 26/04/2024).
5. Australian Institute of Health and Welfare. Cancer data in Australia. <https://www.aihw.gov.au/reports/cancer/cancer-data-in-australia/contents/about> (2019, accessed 14/01/24).
6. Tateo V, Marchese PV, Mollica V, Massari F, Kurzrock R, Adashek JJ. Agnostic Approvals in Oncology: Getting the Right Drug to the Right Patient with the Right Genomics. *Pharmaceuticals (Basel)*. 2023;16(4):614. Published 2023 Apr 19. doi:10.3390/ph16040614.
7. Gouda MA, Nelson BE, Buschhorn L, Wahida A, Subbiah V. Tumor-Agnostic Precision Medicine from the AACR GENIE Database: Clinical Implications. *Clin Cancer Res*. 2023;29(15):2753-2760. doi:10.1158/1078-0432.CCR-23-0090.
8. IQVIA, 2025 *Global Oncology Trends 2025*. <https://www.iqvia.com/-/media/iqvia/pdfs/institute-reports/global-oncology-trends-2025/iqvia-institute-global-oncology-trends-2025-05-25-forweb.pdf>, (2025, accessed 13/06/2025).

Since 2000, validated molecular targets have expanded rapidly,<sup>2,3</sup> contributing to a more than doubling of five-year survival in Australia.<sup>4</sup>

## About PrOSPeCT

PrOSPeCT is a national precision oncology initiative established in 2023 through a combination of public and private investment exceeding **\$185 million**, including **\$61.2 million in Australian Government funding** under the Modern Manufacturing Initiative. The program provides large-scale access to CGP for patients with advanced and incurable cancers, supports recruitment into biomarker-driven clinical trials, and generates a nationally significant real-world data asset to inform research, policy and investment.

At the core of PrOSPeCT is a coordinated, system-wide approach to molecular profiling and clinical trial matching. By enabling CGP at scale, PrOSPeCT overcomes the limitations of fragmented, trial-by-trial testing models and improves equitable access to precision oncology,

particularly for patients with rare cancers and low-frequency biomarkers. Omico operates the platform as a trusted, independent intermediary, coordinating patients, clinicians and industry sponsors through a single national clinical framework underpinned by the Cancer Screening Program (CaSP).

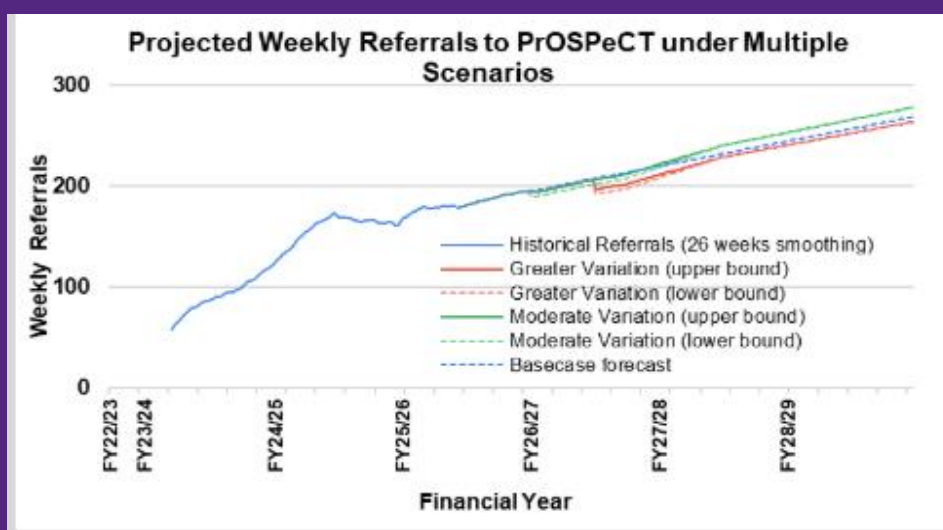
PrOSPeCT has also established a robust real-world data capability, linking genomic, clinical and outcomes data through secure and transparent governance arrangements. This infrastructure supports longitudinal follow-up, health technology assessment, regulatory decision-making and health system planning, while enabling efficient patient recruitment for clinical trials. Omico acts as a neutral data steward, ensuring ethical, secure and equitable use of data for public benefit.

## Referral Trends and Patient Demand

As precision oncology becomes increasingly embedded in clinical practice, demand for access to PrOSPeCT has continued to grow, placing pressure on program capacity and funding.

Forecasts based on 19,000 referrals to date project steadily increasing demand through FY28–29 as seen in Figure 1. The modelling incorporates a range of scenarios reflecting potential changes in the healthcare environment, including factors that may influence uptake of CGP.

Designed to support approximately 8,000 patients per year (~153 per week); over the past two years, referral rates have risen to an average of ~185 per week and are projected to reach ~250 per week by 2030. Growth is concentrated among patients with rare cancers, regional and remote populations, and other priority groups.



**Figure 1:** Projected weekly referrals to PrOSPeCT under multiple scenarios. The base case represents continuation of current referral trends, while moderate and greater variation scenarios illustrate potential temporary fluctuations in demand due to changes in external conditions. Each variation shows a lower and upper bound to reflect uncertainty in recovery and growth trajectories.

### Proposed Continuation Funding

Based on program requirements, **\$71 million in continuation funding is requested to maintain delivery and support projected growth in demand for molecular profiling and matched therapy recommendations through 30 June 2028.**

Allocating continuation funding will bring the total government contribution to the PrOSPeCT program to \$101.8 million from 1 January 2026 to 30 June 2028 as outlined in Table 1. enabling more than 25,000 patient referrals. The expected patient impact is outlined in Figure 2.

**The program will improve access to genomics-informed cancer care, particularly for people with rare cancers and those facing geographic or systemic barriers.**



**Table 1.** Budgeted annual referral volumes with costs broken down by government and Omico contributions.

Financial Year (referrals accepted)	Existing Government Funding <sup>1</sup>	Continuation Funding Requested	Omico Contribution	Notes:
2025-2026 (N=4,810)	\$8,123,321	\$11,416,055	\$3,357,364	Assumes existing funding exhausted by 30 Sept 2026.
2026-2027 (N=10,400)	\$16,871,405	\$28,067,296	\$6,436,857	
2027-2028 (N=10,400)	\$5,805,274	\$29,405,430	\$6,009,937	Referrals accepted to June 30, 2028.
2028-2029		\$2,111,219	\$1,944,236	Ongoing patient follow-up through to the end of 2028 but all funding fully acquitted by June 30, 2028.
<b>Total:</b> (N=25,610)	<b>\$30,800,000</b>	<b>\$71,000,000</b>	<b>\$17,748,394</b>	<b>\$119,548,394</b>

<sup>1</sup> Funded grant activity 4-L6UOYY1.

## Proposed deliverables:

### Deliverable 1: Program Reach

Accept and manage referrals at scale and in line with growth totaling 25,610 referrals between January 1, 2026 and 30 June 2028.

### Deliverable 2: Equitable Access

Deliver equitable access to genomics-informed cancer care by achieving a cohort comprising  $\geq 50\%$  people with rare cancers,  $\geq 30\%$  people from rural, regional and remote communities, and  $\geq 2\%$  First Nations people with cancer.

### Deliverable 3: Real-World Evidence and Value

Collect and integrate real-world data to support evidence generation and evaluation of health outcomes and value for money.

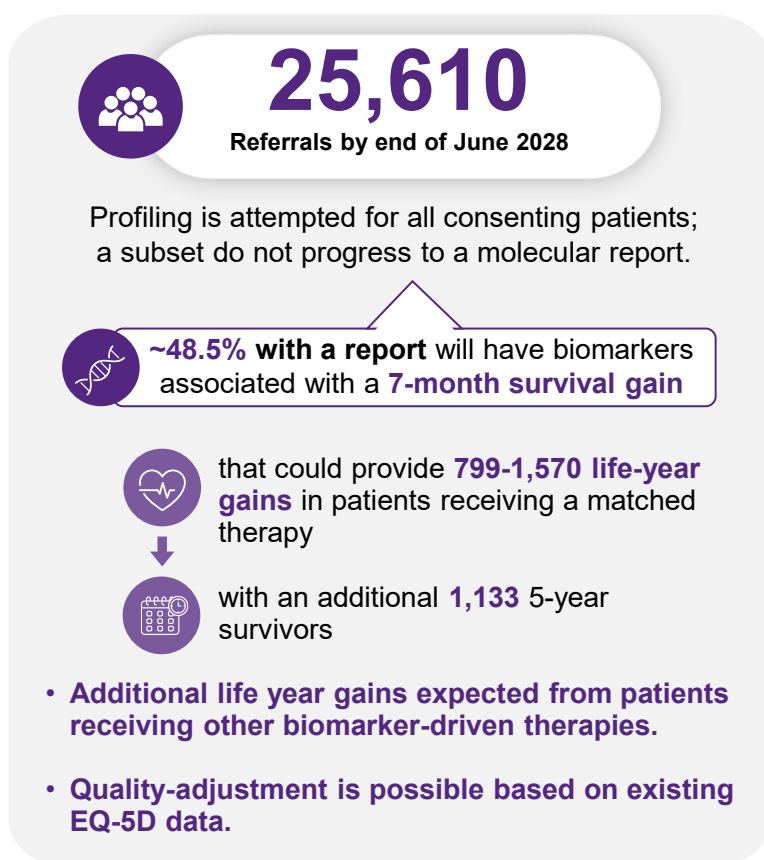
### Deliverable 4: Independent Oversight

Undertake an independent and transparent evaluation of the program's clinical, scientific, data, ethical and governance arrangements, ensuring responsible data use and public trust.

### Deliverable 5: National Mainstreaming Model

Engage with key stakeholders to advance national models for integrating precision oncology into routine clinical care.

Expected benefits include **more timely, precise treatments and potential survival benefits (compared with standard care)** for patients who undergo successful genomic profiling receiving a matched therapy.



**Figure 2.** Expected patient benefits from continuing PrOSPeCT based on retrospective data.

### Return on investments in precision oncology

To date, investment in ProSPeCT has delivered measurable returns across the health system, the life sciences sector, and for patients, reinforcing the value for money of public expenditure.

#### *Economic and industry return:*

- **More than \$200 million in direct foreign investment** for 98 industry-sponsored trials to date, with ~16 new trials that would never have come to Australia without this infrastructure and **~\$85 million in domestic investment** in research and development, equipment, technology and exports.
- Established a **viable national market for clinical-grade genomic profiling** demonstrating scalable operations and sustainable service delivery that underpins a competitive commercial ecosystem.

#### *Workforce development:*

- **Over 1,500 jobs created including highly-skilled roles** in medicine and science and indirect jobs across pathology, health and pharmacy,
- Funding for **39 traineeships in clinical research boosting capabilities** in regional and First Nations communities.

#### *Sovereign capabilities:*

- **Accreditation of 7 Australian pathology laboratories** to deliver clinical-grade CGP at scale (previously offshore now available locally with a national footprint)
- **Expansion of infrastructure to store and access critical cancer biospecimens as a national asset** supporting research and long-term national capacity for diagnostics and therapeutic development

#### *Reduced patient financial burden:*

- **Avoided out-of-pocket costs for patients are estimated at more than \$60 million** with additional savings when patients gain access to fully-funded therapies through clinical trials, particularly for those who would otherwise self-fund.

Omico is continuing to build the evidence base on the direct and indirect value of precision oncology investment through ProSPeCT, to inform future policy, funding, and system integration decisions. In addition to improving cancer outcomes, evidence is also emerging that accelerating domestic clinical trial activity and the availability of precision oncology, can reduce government-funded drug expenditure, while also contributing to shorter hospital stays and more efficient diagnosis

### Alignment with government priorities and health system reform

ProSPeCT improves access to genomics-driven care, addresses unmet needs in rare and less common cancers, and generates high-quality real-world evidence to support Health Technology Assessment (HTA) reform and funding decisions. The program promotes equitable access for rural, regional, and remote patients and contributes to Closing the Gap for First Nations peoples, while strengthening national capability in genomics, cancer research, and precision oncology. With insights gained through ProSPeCT, Omico provides expert guidance and strategic advice to key government stakeholders, including Genomics Australia and Cancer Australia, supporting the mainstreaming of precision oncology into routine care and informing evidence-based policy, investment, and system innovation.



## Conclusion

PrOSPeCT provides **equitable access** to genomic profiling and matched treatment **recommendations**, connecting Australians with advanced and incurable cancers—including those with **rare cancers, regional and remote patients, and First Nations peoples**—to appropriate clinical trials and targeted therapies. The program also generates high-quality real-world evidence to inform policy, Health Technology Assessment, and system planning.

**\$71 million is requested to maintain delivery and support projected growth in demand through 30 June 2028 supporting over 25,000 referrals.** This continuation funding is essential to maintain services, protect established infrastructure and workforce capability, and ensure ongoing patient access.

Investment in PrOSPeCT delivers **strong returns**, including accelerated clinical trials, growth of Australia's life sciences sector, **1,500+ jobs created, \$200 million in foreign investment and \$85 million in domestic investment, with >\$60 million in avoided out-of-pocket costs**, while strengthening **sovereign capability** through genomic profiling.

Continued government support will ensure Australians benefit from timely access to precision oncology opportunities, delivering both health and economic outcomes, and enabling the mainstreaming of precision oncology into standard care.

### Contacts:

#### **Professor David Thomas**

Chief of Science and Strategy, Omico Director, Centre of Molecular Oncology, UNSW

[dmthomas@unsw.edu.au](mailto:dmthomas@unsw.edu.au)

#### **Mr. Ian Black**

Chief Executive Officer, Omico

[i.black@omico.org.au](mailto:i.black@omico.org.au)



**UNSW**  
SYDNEY